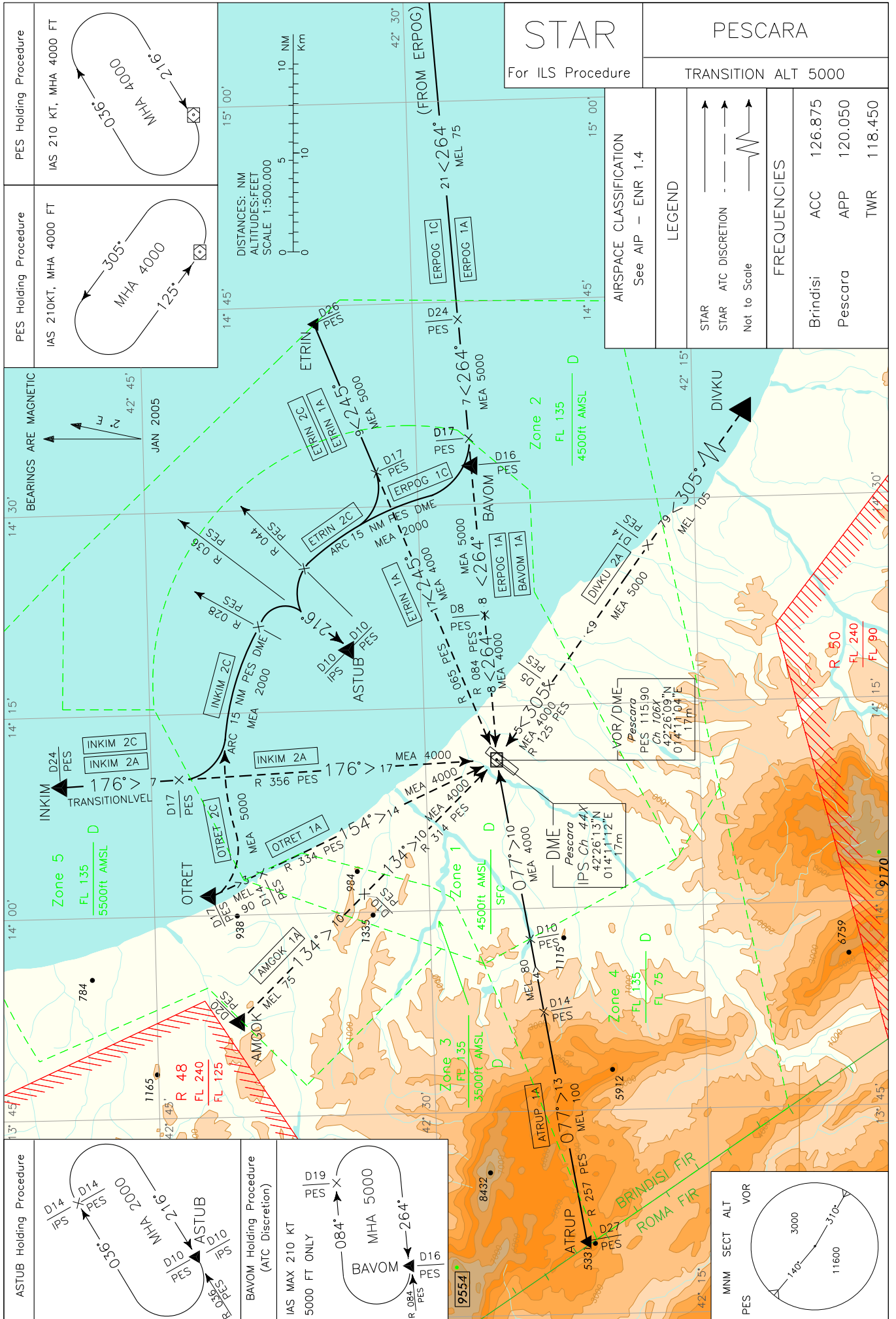


CHANGE: RPT NIKPU RENAMED AMGOK - STAR NIKPU 1A RENAMED AMGOK 1A



ATRUP 1A

ATRUP – TR 077° (RDL 257 PES VOR) – PES VOR/DME.

MEL/MEA: ATRUP – RDL 257/14 NM PES VOR/DME: FL 100; RDL 257/14 NM PES VOR/DME – RDL 257/10 NM PES VOR/DME: FL80; RDL 257/10 NM PES VOR/DME – PES VOR/DME: 4000 FT

BAVOM 1A (A discrezione ATC)

BAVOM – TR 264° (RDL 084 PES VOR) – PES VOR/DME.

MEA: BAVOM – RDL 084/8 NM PES VOR/DME : 5000FT; RDL 084/8 NM PES VOR/DME - PES VOR/DME: 4000 FT

DIVKU 2A (A discrezione ATC)

DIVKU – TR 305° (RDL 125 PES) – PES VOR/DME.

MEL/MEA: DIVKU – RDL 125/14 NM PES VOR/DME: FL 105; RDL 125/14 NM PES VOR/DME – RDL 125/5 NM PES VOR/DME: 5000 FT; RDL 125/5 NM PES VOR/DME – PES VOR/DME: 4000 FT

ERPOG 1A (A discrezione ATC)

ERPOG – TR 264° (RDL 084 PES VOR) – PES VOR/DME.

MEL/MEA: ERPOG – RDL 084/24 NM PES VOR/DME: FL 75; RDL 084/24 NM PES VOR/DME – BAVOM - RDL 084/8 NM PES VOR/DME : 5000 FT; RDL 084/8 NM PES VOR/DME – PES VOR/DME: 4000 FT

ERPOG 1C

ERPOG – TR 264° (RDL 084 PES VOR) fino a 17 NM PES DME, quindi virare a destra fino ad intercettare e seguire ARC 15 NM PES DME. Attraversando RDL 044 PES VOR virare a sinistra fino ad intercettare e seguire RDL 036 PES VOR (TR 216°) per il punto ASTUB.

MEL/MEA: ERPOG – RDL 084/24 NM PES VOR/DME: FL 75; RDL 084/24 NM PES VOR/DME – RDL084/17 NM PES VOR/DME: 5000 FT; RDL 084/17 NM PES VOR/DME – ASTUB: 2000 FT

ETRIN 1A (A discrezione ATC)

ETRIN – TR 245° (RDL 065 PES VOR) – PES VOR/DME.

MEA: ETRIN – RDL 065/17 NM PES VOR/DME: 5000 FT; RDL 065/17 NM PES VOR/DME – PES VOR/DME: 4000 FT

ETRIN 2C

ETRIN – TR 245° (RDL 065 PES VOR) fino a 17 NM PES DME quindi virare a destra fino ad intercettare e seguire ARC 15 NM PES DME. Attraversando RDL 044 PES VOR virare a sinistra fino ad intercettare e seguire RDL 036 PES VOR (TR 216°) per il punto ASTUB.

MEA: ETRIN – RDL 065/17 NM PES VOR/DME: 5000 FT; RDL 065/17 NM PES VOR/DME – ASTUB: 2000 FT

INKIM 2A (A discrezione ATC)

INKIM – TR 176° (RDL 356 PES VOR) – PES VOR/DME.

MEA: INKIM – RDL 356/17 NM PES VOR/DME: TRL; RDL 356/17 NM PES VOR/DME – PES VOR/DME: 4000 FT

INKIM 2C

INKIM – TR 176° (RDL 356 PES VOR) fino a 17 NM PES DME, quindi virare a sinistra fino ad intercettare e seguire ARC 15 NM PES DME. Attraversando RDL 028 PES VOR virare a destra fino ad intercettare e seguire RDL 036 PES VOR (TR 216°) per il punto ASTUB.

MEA: INKIM – RDL 356/17 NM PES VOR/DME: TRL; RDL 356/17 NM PES VOR/DME - ASTUB: 2000 FT

AMGOK 1A (A discrezione ATC)

AMGOK – TR 134° (RDL 314 PES VOR) – PES VOR/DME.

MEL/MEA: AMGOK –RDL 314/10 NM PES VOR/DME: FL75; RDL 314/10 NM PES VOR/DME – PES VOR/DME: 4000 FT

ATRUP 1A

ATRUP – TR 077° (RDL 257 PES VOR) – PES VOR/DME.

BAVOM 1A (ATC discretion)

BAVOM – TR 264° (RDL 084 PES VOR) – PES VOR/DME.

DIVKU 2A (ATC discretion)

DIVKU – TR 305° (RDL 125 PES) – PES VOR/DME.

ERPOG 1A (ATC discretion)

ERPOG – TR 264° (RDL 084 PES VOR) – PES VOR/DME.

ERPOG 1C

ERPOG – TR 264° (RDL 084 PES VOR) until 17 NM PES DME, then turn right until joining ARC 15 NM PES DME. Crossing RDL 044 PES VOR turn left until joining RDL 036 PES VOR (TR 216°) bound to ASTUB.

ETRIN 1A (ATC discretion)

ETRIN – TR 245° (RDL 065 PES VOR) – PES VOR/DME.

ETRIN 2C

ETRIN – TR 245° (RDL 065 PES VOR) until 17 NM PES DME then turn right until joining ARC 15 NM PES DME. Crossing RDL 044 PES VOR turn left until joining RDL 036 PES VOR (TR 216°) bound to ASTUB.

INKIM 2A (ATC discretion)

INKIM – TR 176° (RDL 356 PES VOR) – PES VOR/DME.

INKIM 2C

INKIM – TR 176° (RDL 356 PES VOR) until 17 NM PES DME, then turn left until joining ARC 15 NM PES DME. Crossing RDL 028 PES VOR turn right until joining RDL 036 PES VOR (TR 216°) bound to ASTUB.

AMGOK 1A (ATC discretion)

AMGOK – TR 134° (RDL 314 PES VOR) – PES VOR/DME.

OTRET 1A (A discrezione ATC)

OTRET – TR 154° (RDL 334 PES VOR) – PES VOR/DME.

MEL/MEA: OTRET – RDL 334/14 NM PES VOR/DME: FL 90; RDL 334/14 NM PES VOR/DME – PES VOR/DME: 4000 FT

OTRET 2C (A discrezione ATC)

OTRET – virare a sinistra fino ad intercettare e seguire ARC 15 NM PES DME. Attraversando RDL 028 PES VOR virare a destra fino ad intercettare e seguire RDL 036 PES VOR (TR 216°) per il punto ASTUB.

MEA: OTRET – INT ARC 15 NM PES DME/RDL 356 PES VOR: 5000 FT; INT ARC 15 NM PES DME/RDL 356 PES VOR – ASTUB: 2000 FT

OTRET 1A (ATC discretion)

OTRET – TR 154° (RDL 334 PES VOR) – PES VOR/DME.

OTRET 2C (ATC discretion)

OTRET – turn left until joining ARC 15 NM PES DME. Crossing RDL 028 PES VOR turn right until joining RDL 036 PES VOR (TR 216°) bound to ASTUB.

ATRUP 1A

ATRUP – TR 077° (RDL 257 PES VOR) – PES VOR/DME.

MEL/MEA: ATRUP – RDL 257/14 NM PES VOR/DME: FL 100; RDL 257/14 NM PES VOR/DME – RDL 257/10 NM PES VOR/DME: FL80; RDL 257/10 NM PES VOR/DME – PES VOR/DME: 4000 FT

BAVOM 1A (A discrezione ATC)

BAVOM – TR 264° (RDL 084 PES VOR) – PES VOR/DME.

MEA: BAVOM – PES VOR/DME: 4000 FT

DIVKU 2A (A discrezione ATC)

DIVKU – TR 305° (RDL 125 PES VOR) – PES VOR/DME.

MEL/MEA: DIVKU – RDL 125/14 NM PES VOR/DME: FL 105; RDL 125/14 NM PES VOR/DME – RDL 125/5 NM PES VOR/DME: 5000 FT; RDL 125/5 NM PES VOR/DME – PES VOR/DME: 4000 FT

ERPOG 1A (A discrezione ATC)

ERPOG – TR 264° (RDL 084 PES VOR) – PES VOR/DME.

MEL/MEA: ERPOG – RDL 084/24 NM PES VOR/DME: FL 75; RDL 084/24 NM PES VOR/DME – BAVOM - RDL 084/8 NM PES VOR/DME : 5000 FT; RDL 084/8 NM PES VOR/DME – PES VOR/DME: 4000 FT

ERPOG 1B

ERPOG – TR 264° (RDL 084 PES VOR) fino a 17 NM PES DME, quindi virare a destra fino ad intercettare e seguire ARC 15 NM PES DME. Attraversando RDL 048 PES VOR virare a sinistra fino ad intercettare e seguire RDL 040 PES VOR (TR 220°) per il punto VADKI.

MEL/MEA: ERPOG – RDL 084/24 NM PES VOR/DME: FL 75; RDL 084/24 NM PES VOR/DME – RDL 084/17 NM PES VOR/DME: 5000 FT; RDL 084/17 NM PES VOR/DME – VADKI: 2000 FT

ETRIN 1A (A discrezione ATC)

ETRIN – TR 245° (RDL 065 PES VOR) – PES VOR/DME.

MEA: ETRIN – RDL 065/17 NM PES VOR/DME: 5000 FT; RDL 065/17 NM PES VOR/DME – PES VOR/DME: 4000 FT

ETRIN 2B

ETRIN – TR 245° (RDL 065 PES VOR) fino a 17 NM PES DME quindi virare a destra fino ad intercettare e seguire ARC 15 NM PES DME. Attraversando RDL 048 PES VOR virare a sinistra fino ad intercettare e seguire RDL 040 PES VOR (TR 220°) per il punto VADKI.

MEA: – RDL 065/17 NM PES VOR/DME: 5000 FT; RDL 065/17 NM PES VOR/DME – VADKI: 2000 FT

INKIM 2A (A discrezione ATC)

INKIM – TR 176° (RDL 356 PES VOR) – PES VOR/DME.

MEA: INKIM – RDL 356/17 NM PES VOR/DME: TRL; PES VOR/DME: 4000 FT

INKIM 2B

INKIM – TR 176° (RDL 356 PES VOR) fino a 17 NM PES DME, quindi virare a sinistra fino ad intercettare e seguire ARC 15 NM PES DME. Attraversando RDL 032 PES VOR virare a destra fino ad intercettare e seguire RDL 040 PES VOR (TR 220°) per il punto VADKI.

MEA: INKIM – RDL 356/17 NM PES VOR/DME: TRL; RDL 356/17 NM PES VOR/DME – VADKI: 2000 FT

AMGOK 1A (A discrezione ATC)

AMGOK – TR 134° (RDL 314 PES VOR) – PES VOR/DME.

MEL/MEA: AMGOK – RDL 314/10 NM PES VOR/DME: FL75; RDL 314/10 NM PES VOR/DME – PES VOR/DME: 4000 FT

ATRUP 1A

ATRUP – TR 077° (RDL 257 PES VOR) – PES VOR/DME.

BAVOM 1A (ATC discretion)

BAVOM – TR 264° (RDL 084 PES VOR) – PES VOR/DME.

DIVKU 2A (ATC discretion)

DIVKU – TR 305° (RDL 125 PES VOR) – PES VOR/DME.

ERPOG 1A (ATC discretion)

ERPOG – TR 264° (RDL 084 PES VOR) – PES VOR/DME.

ERPOG 1B

ERPOG – TR 264° (RDL 084 PES VOR) until 17 NM PES DME, then turn right until joining ARC 15 NM PES DME. Crossing RDL 048 PES VOR turn left until joining RDL 040 PES VOR (TR 220°) bound to VADKI.

ETRIN 1A (ATC discretion)

ETRIN – TR 245° (RDL 065 PES VOR) – PES VOR/DME.

ETRIN 2B

ETRIN – TR 245° (RDL 065 PES VOR) – until 17 NM PES DME then turn right until joining ARC 15 NM PES DME. Crossing RDL 048 PES VOR turn left until joining RDL 040 PES VOR (TR 220°) bound to VADKI.

INKIM 2A (ATC discretion)

INKIM – TR 176° (RDL 356 PES VOR) – PES VOR/DME.

INKIM 2B

INKIM – TR 176° (RDL 356 PES VOR) until 17 NM PES DME, then turn left until joining ARC 15 NM PES DME. Crossing RDL 032 PES VOR turn right until joining RDL 040 PES VOR (TR 220°) bound to VADKI.

AMGOK 1A (ATC discretion)

AMGOK – TR 134° (RDL 314 PES VOR) – PES VOR/DME.

OTRET 1A (A discrezione ATC)

OTRET – TR 154° (RDL 334 PES VOR) – PES VOR/DME.

MEL/MEA: OTRET – RDL 334/14 NM PES VOR/DME: FL 90; RDL 334/14 NM PES VOR/DME – PES VOR/DME: 4000 FT

OTRET 2B (A discrezione ATC)

OTRET – virare a sinistra fino ad intercettare e seguire ARC 15 NM PES DME. Attraversando RDL 032 PES VOR virare a destra fino ad intercettare e seguire RDL 040 PES VOR (TR 220°) per il punto VADKI.

MEA: OTRET – INT ARC 15 NM PES DME/RDL 356 PES VOR: 5000FT; INT ARC 15 NM PES DME/RDL 356 PES VOR – VADKI: 2000 FT

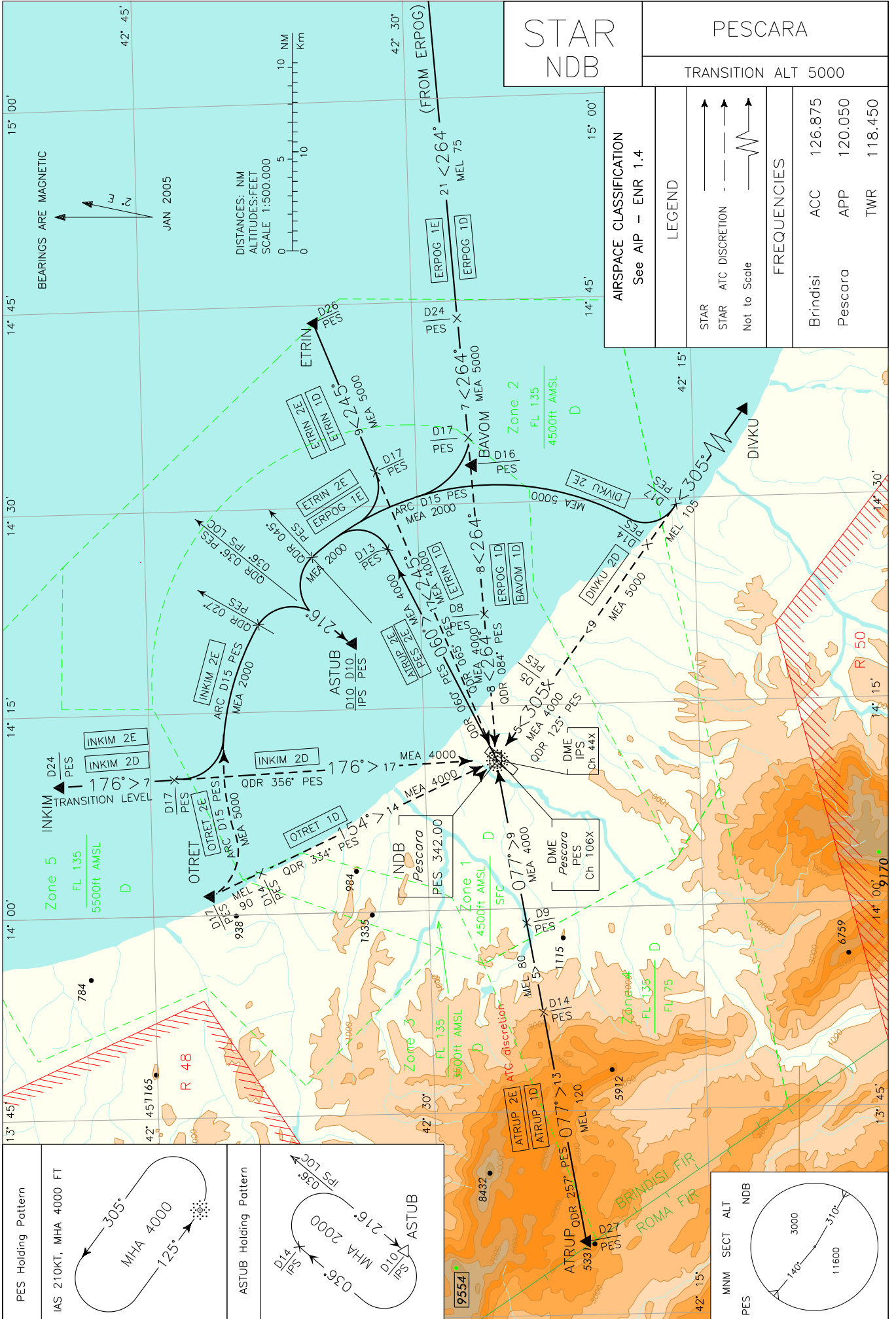
OTRET 1A (ATC discretion)

OTRET – TR 154° (RDL 334 PES VOR) – PES VOR/DME.

OTRET 2B (ATC discretion)

OTRET – turn left until joining ARC 15 NM PES DME. Crossing RDL 032 PES VOR turn right until joining RDL 040 PES VOR (TR 220°) bound to VADKI.

CHANGE: PESCARA CTR LATERAL AND VERTICAL LIMITS UPDATED AND REVISED CHART



ATRUP 1D

ATRUP – TR 077° (QDR 257° PES NDB) – PES NDB.

ATRUP 1D

ATRUP – TR 077° (QDR 257° PES NDB) – PES NDB.

MEL/MEA: ATRUP – QDR 257°/14 NM PES NDB/DME: FL 120; QDR 257°/14 NM PES NDB/DME – QDR 257°/9 NM PES NDB/DME: FL 80;
QDR 257°/9 NM PES NDB/DME – PES NDB/DME: 4000 FT

ATRUP 2E (A discrezione ATC)

ATRUP – TR 077° (QDR 257° PES NDB) – PES NDB. Lasciare PES NDB su QDR 060° (TR 060°) fino a 13 NM PES DME, quindi virare a sinistra fino ad intercettare e seguire QDR 036° PES NDB (TR 216°) per il punto ASTUB.

ATRUP 2E (ATC discretion)

ATRUP – TR 077° (QDR 257° PES NDB) – PES NDB. Leave PES NDB on QDR 060° (TR 060°) until 13 NM PES DME, then turn left until intercepting and following QDR 036° PES NDB (TR 216°) bound to ASTUB.

MEL/MEA: ATRUP – QDR 257°/14 NM PES NDB/DME: FL 120; QDR 257°/14 NM PES NDB/DME – QDR 257°/9 NM PES NDB/DME: FL 80;
QDR 257°/9 NM PES NDB/DME – QDR 060°/13 NM PES NDB/DME: 4000 FT; QDR 060°/13 NM PES NDB/DME – ASTUB: 2000 FT

BAVOM 1D

BAVOM – TR 264° (QDR 084° PES NDB) – PES NDB.

BAVOM 1D

BAVOM – TR 264° (QDR 084° PES NDB) – PES NDB.

MEL/MEA: BAVOM – QDR 084°/8 NM PES NDB/DME: 5000 FT; QDR 084°/8 NM PES NDB/DME – PES NDB: 4000 FT

DIVKU 2D (A discrezione ATC)

DIVKU – TR 305° (QDR 125° PES NDB) – PES NDB.

DIVKU 2D (ATC discretion)

DIVKU – TR 305° (QDR 125° PES NDB) – PES NDB.

MEL/MEA: DIVKU – QDR 125°/14 NM PES NDB/DME: FL 105; QDR 125°/14 NM PES NDB/DME – QDR 125°/5 NM PES NDB/DME: 5000 FT; QDR 125°/5 NM PES NDB/DME – PES NDB: 4000 FT

DIVKU 2E

DIVKU – TR 305° (QDR 125° PES) fino a 17 NM PES DME, quindi virare a destra fino ad intercettare e seguire ARC 15 NM PES DME. Intercettando QDR 045° PES NDB virare a sinistra fino ad intercettare e seguire QDR 036° PES NDB (TR 216°) per il punto ASTUB.

DIVKU 2E

DIVKU – TR 305° (QDR 125° PES NDB) until 17 NM PES DME, then turn right until intercepting and following ARC 15 NM PES DME. Intercepting QDR 045° PES NDB turn left until intercepting and following QDR 036° PES NDB (TR 216°) bound to ASTUB.

MEL/MEA: DIVKU – QDR 125°/14 NM PES NDB/DME: FL 105; QDR 125°/17 NM PES NDB/DME – ARC 15 NM PES DME – INT QDR 084° PES NDB: 5000 FT; INT QDR 084° PES NDB – ASTUB: 2000 FT

ERPOG 1D (A discrezione ATC)

ERPOG – TR 264° (QDR 084° PES NDB) – PES NDB.

ERPOG 1D (ATC discretion)

ERPOG – TR 264° (QDR 084° PES NDB) – PES NDB.

MEL/MEA: ERPOG – QDR 084°/24 NM PES NDB/DME: FL 75; QDR 084°/24 NM PES NDB/DME – BAVOM - QDR 084°/8 NM PES NDB/DME: 5000 FT; QDR 084°/8 NM PES NDB/DME – PES NDB: 4000 FT

ERPOG 1E

ERPOG – TR 264° (QDR 084° PES NDB) fino a 17 NM PES DME, quindi virare a destra fino ad intercettare e seguire ARC 15 NM PES DME. Intercettando QDR 045° PES NDB virare a sinistra fino ad intercettare e seguire QDR 036° PES NDB (TR 216°) per il punto ASTUB.

ERPOG 1E

ERPOG – TR 265° (QDR 084° PES NDB) until 17 NM PES DME, then turn right until intercepting and following ARC 15 NM PES DME. Intercepting QDR 045° PES NDB turn left until intercepting and following QDR 036° PES NDB (TR 216°) bound to ASTUB.

MEL/MEA: ERPOG – QDR 084°/24 NM PES NDB/DME: FL 75; QDR 084°/24 NM PES NDB/DME – QDR 084°/17 NM PES NDB/DME: 5000 FT; QDR 084°/17 NM PES NDB/DME – ARC 15 NM PES DME – ASTUB: 2000 FT

ETRIN 1D (A discrezione ATC)

ETRIN – TR 245° (QDR 065° PES NDB) – PES NDB.

ETRIN 1D (ATC discretion)

ETRIN – TR 245° (QDR 065° PES NDB) – PES NDB.

MEA: ETRIN – QDR 065°/17 NM PES NDB/DME: 5000 FT; QDR 065°/17 NM PES NDB/DME – PES NDB/DME: 4000 FT

ETRIN 2E

ETRIN – TR 245° (QDR 065° PES NDB) fino a 17 NM PES DME, quindi virare a destra su fino ad intercettare e seguire ARC 15 NM PES DME. Attraversando QDR 045° PES NDB virare a sinistra fino ad intercettare e seguire QDR 036° PES NDB (TR 216°) per il punto ASTUB.

ETRIN 2E

ETRIN – TR 245° (QDR 065° PES NDB) until 17 NM PES DME, then turn right until intercepting and following ARC 15 NM PES DME. Crossing QDR 045° PES NDB turn left until intercepting and following QDR 036° PES NDB (TR 216°) bound to ASTUB.

MEA: ETRIN – QDR 065°/17 NM PES NDB/DME: 5000 FT; QDR 065°/17 NM PES NDB/DME – ASTUB: 2000 FT

INKIM 2D (A discrezione ATC)

INKIM – TR 176° (QDR 356° PES NDB) – PES NDB.

INKIM 2D (ATC discretion)

INKIM – TR 176° (QDR 356° PES NDB) – PES NDB.

MEA: INKIM – QDR 356°/17 NM PES NDB/DME: TRL; QDR 356°/17 NM PES NDB/DME – PES NDB: 4000 FT

INKIM 2E

INKIM – TR 176° (QDR 356° PES NDB) fino a 17 NM PES DME, quindi virare a sinistra fino ad intercettare e seguire ARC 15 NM PES DME. Attraversando QDR 027° PES NDB virare a destra fino ad intercettare e seguire QDR 036° PES NDB (TR 216°) per il punto ASTUB.

INKIM 2E

INKIM – TR 176° (QDR 356° PES NDB) until 17 NM PES DME, then turn left until intercepting and following ARC 15 NM PES DME. Crossing QDR 027° PES NDB turn right until intercepting and following QDR 036° PES NDB (TR 216°) bound to ASTUB.

MEA: INKIM – QDR 356°/17 NM PES NDB/DME: TRL; QDR 356°/17 NM PES NDB/DME – ASTUB: 2000 FT

OTRET 1D (A discrezione ATC)

OTRET – TR 154° (QDR 334° PES NDB) – PES NDB.

OTRET 1D (ATC discretion)

OTRET – TR 154° (QDR 334° PES NDB) – PES NDB.

MEL/MEA: OTRET – QDR 334°/14 NM PES NDB/DME: FL 90; QDR 334°/14 NM PES NDB/DME – PES NDB: 4000 FT

OTRET 2E (A discrezione ATC)

OTRET – virare a sinistra fino ad intercettare e seguire ARC 15 NM PES DME. Attraversando QDR 027° PES NDB virare a destra fino ad intercettare e seguire QDR 036° PES NDB (TR 216°) per il punto ASTUB.

OTRET 2E (ATC discretion)

OTRET – turn left until intercepting and following ARC 15 NM PES DME. Crossing QDR 027° PES NDB turn right until intercepting and following QDR 036° PES NDB (TR 216°) bound to ASTUB.

MEA: OTRET – INT ARC 15 NM PES DME/ QDR 356° PES NDB: 5000 FT; INT ARC 15 NM PES DME/ QDR 356° PES NDB – ASTUB: 2000 FT

PES 2E

PES NDB – TR 060° (QDR 060° PES NDB) fino a 13 NM PES DME, quindi virare a sinistra fino ad intercettare e seguire QDR 036° PES NDB (TR 216°) per il punto ASTUB.

PES 2E

PES NDB – TR 060° (QDR 060° PES NDB) until 13 NM PES DME, then turn left until intercepting and following QDR 036° PES NDB (TR 216°) bound to ASTUB.

MEA: PES NDB – QDR 060°/13 NM PES NDB/DME: 4000 FT; QDR 060°/13 NM PES NDB/DME – ASTUB: 2000 FT